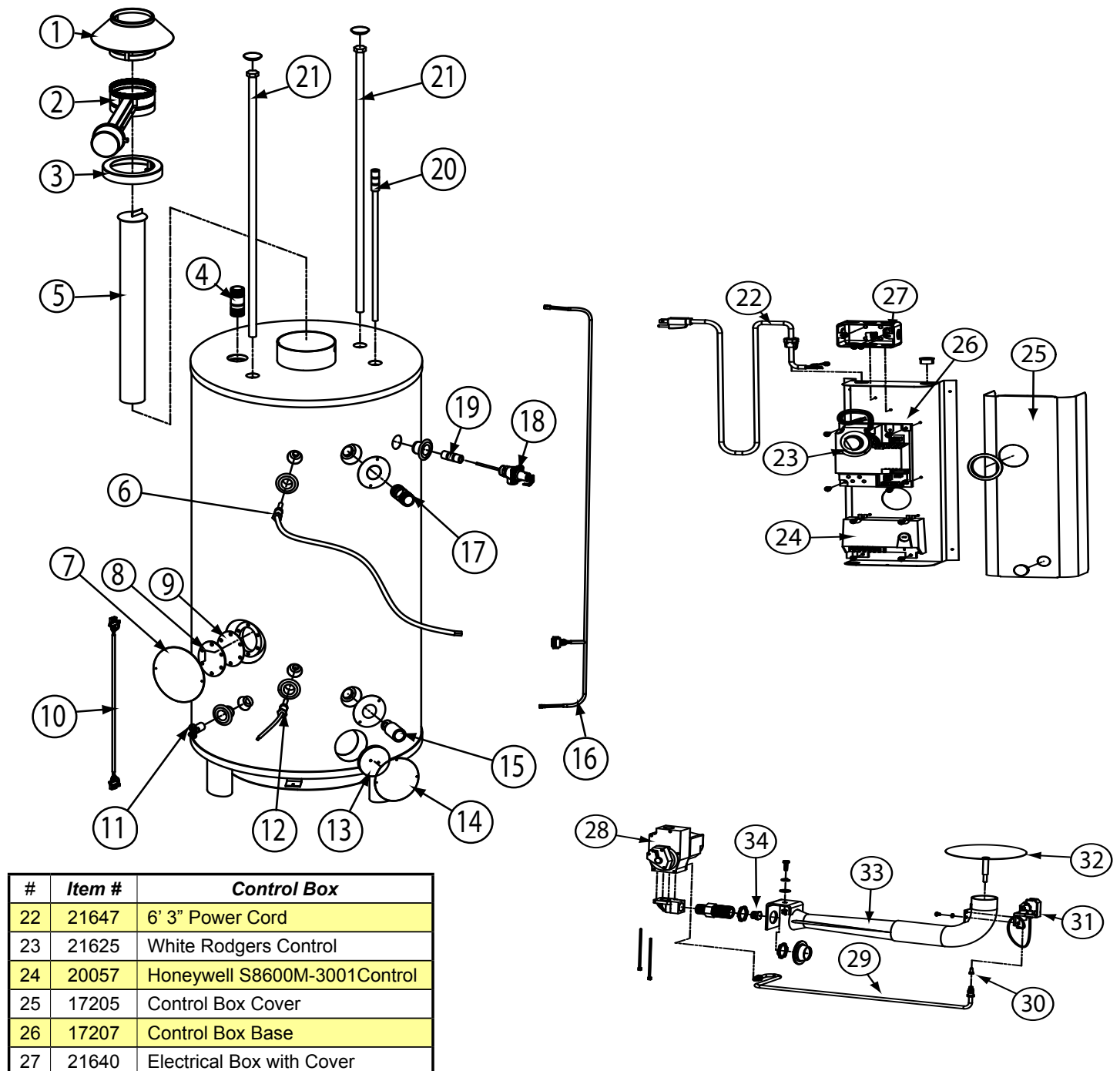


# EZFIT EZ80-156 PARTS BREAKDOWN

#	Item #	Description
1	16420	Draft Hood
2	16400	6" Electric Damper
3	16430	8" to 6" Reducer
4	15335	Nipple; 1-1/2"x4"; Plastic Lined
5	16610	28" Baffle
6	21642	Upper Temperature Sensor
7	17190	Hand Hole Jacket Cover
8	27030	Hand Hole Cover
9	27015	Hand Hole Gasket
10	21631	Gas Valve Wire Harness
11	15590	Brass Drain Valve; 3/4"
12	21645	Lower Temperature Sensor
13	18014	Chamber Plug
14	17225	Inspection Hole Jacket Cover
15	15315	Bottom Inlet; 1-1/2"x3"
16	21638	3-Way Damper Harness
17	15335	Nipple; 1-1/2"x4"; Plastic Lined
18	21790	T&P Valve; 3/4"
19	15370	Nipple; 3/4"x3"; Plastic Lined
20	15400	Dip Tube; 1"x4-1/2"x34"
21	15040	Magnesium Anode Rod; 3/4"x40"

#	Item #	Description
Opt	25552	Natural Gas to LP Conversion Kit
Opt	25545	Leg Extension Kit

#	Item #	Burner Assembly
28	20040	LP Gas Valve
28	20046	Natural Gas Valve
29	20105	Pilot Tube
30	20052	Natural Gas Pilot Orifice inc. w 31
30	20054	LP Pilot Orifice
31	20052	Pilot Ignitor Assembly
32	20080	4" Flame Spreader
33	20066	15" Burner Venturi Tube
34	20090	Gas Orifice



#	Item #	Control Box
22	21647	6' 3" Power Cord
23	21625	White Rodgers Control
24	20057	Honeywell S8600M-3001 Control
25	17205	Control Box Cover
26	17207	Control Box Base
27	21640	Electrical Box with Cover