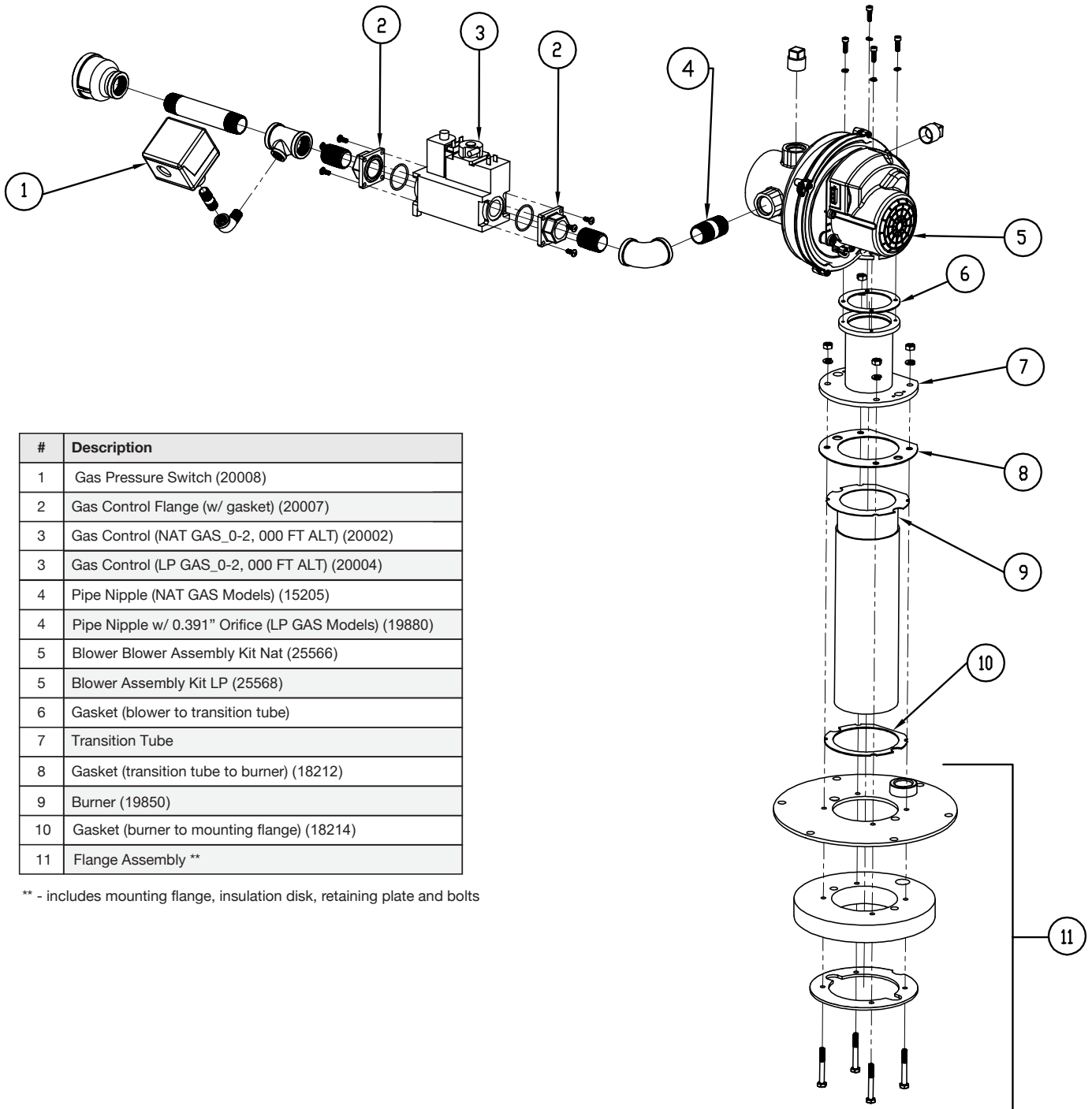


# Parts List: OT300-500G: Gas Train and Burner Assembly



#	Description
1	Gas Pressure Switch (20008)
2	Gas Control Flange (w/ gasket) (20007)
3	Gas Control (NAT GAS_0-2, 000 FT ALT) (20002)
3	Gas Control (LP GAS_0-2, 000 FT ALT) (20004)
4	Pipe Nipple (NAT GAS Models) (15205)
4	Pipe Nipple w/ 0.391" Orifice (LP GAS Models) (19880)
5	Blower Blower Assembly Kit Nat (25566)
5	Blower Assembly Kit LP (25568)
6	Gasket (blower to transition tube)
7	Transition Tube
8	Gasket (transition tube to burner) (18212)
9	Burner (19850)
10	Gasket (burner to mounting flange) (18214)
11	Flange Assembly **

\*\* - includes mounting flange, insulation disk, retaining plate and bolts