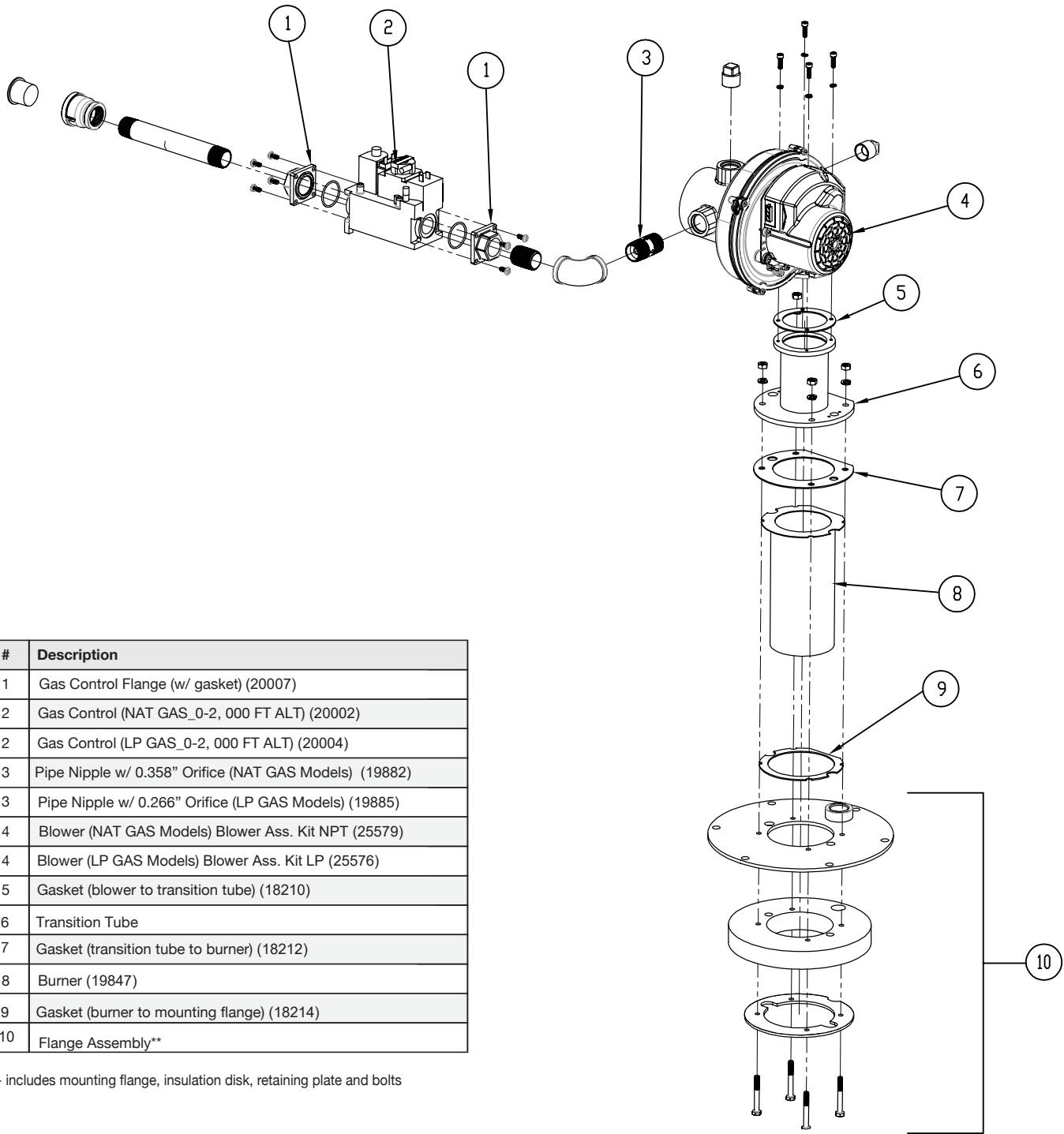


# Parts List: OT200-299: Gas Train and Burner Assembly



#	Description
1	Gas Control Flange (w/ gasket) (20007)
2	Gas Control (NAT GAS_0-2, 000 FT ALT) (20002)
2	Gas Control (LP GAS_0-2, 000 FT ALT) (20004)
3	Pipe Nipple w/ 0.358" Orifice (NAT GAS Models) (19882)
3	Pipe Nipple w/ 0.266" Orifice (LP GAS Models) (19885)
4	Blower (NAT GAS Models) Blower Ass. Kit NPT (25579)
4	Blower (LP GAS Models) Blower Ass. Kit LP (25576)
5	Gasket (blower to transition tube) (18210)
6	Transition Tube
7	Gasket (transition tube to burner) (18212)
8	Burner (19847)
9	Gasket (burner to mounting flange) (18214)
10	Flange Assembly**

\*\* - includes mounting flange, insulation disk, retaining plate and bolts