

ASME Storage Tanks

Vertical Jacketed ASME Certified Storage Tanks

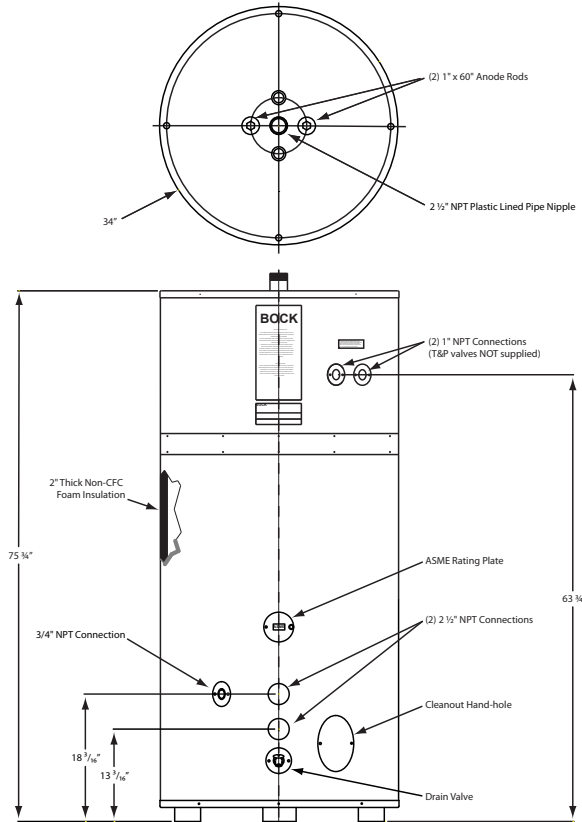


- ◆ 119 gallon and 200 gallon capacities
- ◆ 125 psi and 150 psi models
- ◆ Glass-lined steel tank with 5-year warranty
- ◆ Twin 1" magnesium anode rods
- ◆ Two 1" NPT connections for one or more T&P valves (valves not included)
- ◆ Factory installed brass drain valve
- ◆ Powder coated steel jacket
- ◆ Cleanout hand hole
- ◆ 2" non-CFC foam insulation



ASME Storage Tanks

This product is available from:



Model	Storage GAL (L)	Working Pressure	Dimensions in Inches (cm)		T&P Relief Valve Conn. NPT	Inlet/Return Conn. NPT	Hot Outlet Conn. NPT	Aquastat Conn. NPT	Shipping Weight LBS (kg)
			Diameter	Height/Length					
119ST-A-150	119 (450.46)	150	28.00 (71.12)	65.50 (166.37)	1 x 1	2.0	2.0	.75	385 (174.63)
200ST-A-125	200 (757.08)	125	34.00 (86.36)	79.50 (201.93)	2 x 1	2.5	2.5	.75	872 (395.53)
200ST-A-150	200 (757.08)	150	34.00 (86.36)	79.50 (201.93)	2 x 1	2.5	2.5	.75	872 (395.53)

Warning: Installation should be in accordance with all national and/or local codes. In the absence of local codes, refer to NFPA 54 or ANSI Z.21.10.1.

Caution: The recommended maximum hot water temperature setting for normal residential use is 120°F. Bock recommends a tempering valve or anti-scald valve be installed and used according to the manufacturer's directions to prevent scalding.

Pressures: 119ST-A-150 - Working Pressure, 150 psi; Testing Pressure, 300 psi
 200ST-A-125 - Working Pressure, 125 psi; Testing Pressure, 300 psi
 200ST-A-150 - Working Pressure, 150 psi; Testing Pressure, 300 psi



www.bockwaterheaters.com
 110 South Dickinson Street, Madison, Wisconsin 53703
 Toll Free 800-794-2491 • Phone 608-257-2225 • Fax 608-257-5304

